

Sample Name: 126-183-59-CAT2919-P1

Acq. Operator : 126-183-59-CAT2919-P1

Acq. Instrument : Instrument 1

Location : Vial 1

Injection Date : 11/9/2017 8:46:29 AM

Inj Volume : 1.0 µl

Acq. Method : C:\CHEM32\1\METHODS\CHEM_1.M

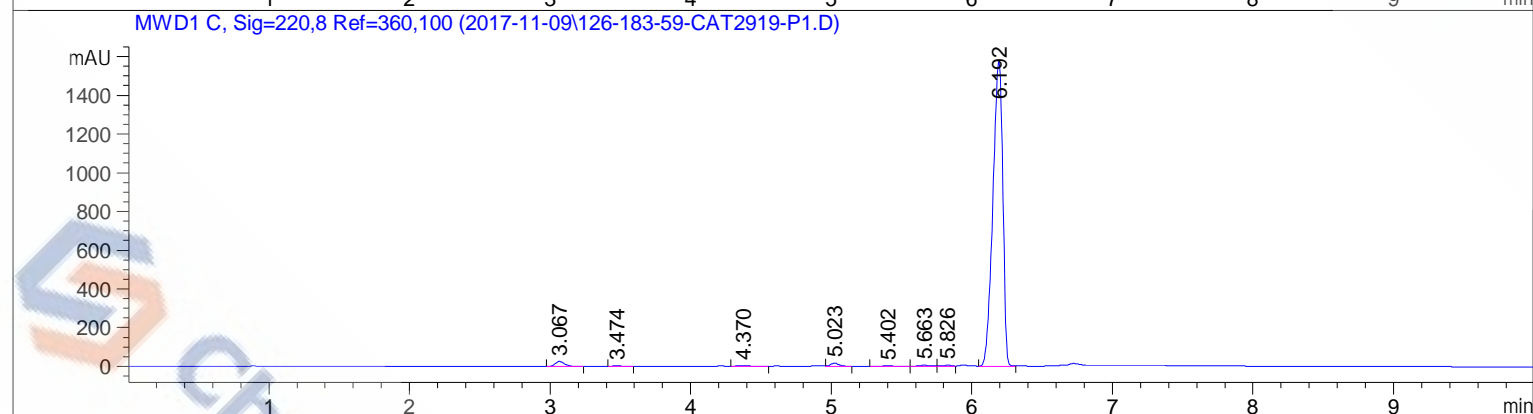
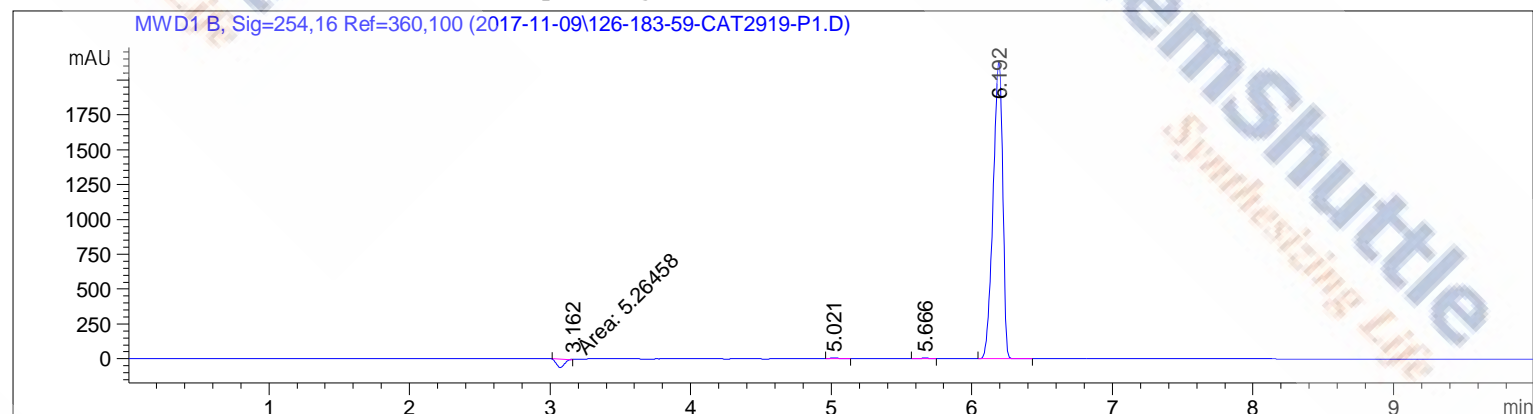
Last changed : 11/9/2017 8:42:19 AM by 126-183-60-CAT2911-P1

(modified after loading)

Analysis Method : C:\CHEM32\1\DATA\2017-11-09\110-186-CAT2853-P2.D\DA.M (CHEM_1.M)

Last changed : 11/9/2017 10:20:38 AM by 110-186-CAT2853-P2

Additional Info : Peak(s) manually integrated



Area Percent Report

Sorted By : Signal
Multiplier: : 1.0000
Dilution: : 1.0000
Use Multiplier & Dilution Factor with ISTDs

Signal 1: MWD1 B, Sig=254,16 Ref=360,100

Peak #	RetTime [min]	Type	Width [min]	Area [mAU*s]	Height [mAU]	Area %
1	3.162	MM	0.0152	5.26458	5.76016	0.0518
2	5.021	VB	0.0568	32.86538	8.96174	0.3232
3	5.666	BV	0.0586	26.30396	6.58177	0.2587
4	6.192	BB	0.0711	1.01031e4	2138.89331	99.3663

Totals : 1.01675e4 2160.19698

Signal 2: MWD1 C, Sig=220,8 Ref=360,100

Peak #	RetTime [min]	Type	Width [min]	Area [mAU*s]	Height [mAU]	Area %
1	3.067	VB	0.0685	113.32558	25.17502	1.4293
2	3.474	BB	0.0538	11.60965	3.39916	0.1464
3	4.370	VV	0.0984	15.01413	2.23401	0.1894
4	5.023	VB	0.0582	62.39724	16.45852	0.7870
5	5.402	BB	0.0639	8.21741	1.92008	0.1036
6	5.663	BV	0.0657	20.38394	4.60119	0.2571
7	5.826	VB	0.0557	16.76918	4.68879	0.2115
8	6.192	BV	0.0747	7680.83740	1580.69189	96.8756

Totals : 7928.55453 1639.16867

=====
*** End of Report ***